

## Lifting capacities

		<b>30000 kg</b>	<b>66140 lbs</b>	<b>B</b>
4.4 m	14' 5"	19900 kg	43870 lbs	
5.6 m	18' 4"	15700 kg	34610 lbs	
7.4 m	24' 3"	12000 kg	26450 lbs	
9.2 m	30' 2"	9700 kg	21380 lbs	

		<b>30000 kg</b>	<b>66140 lbs</b>	<b>C</b>
4.4 m	14' 5"	19640 kg	43300 lbs	
5.6 m	18' 4"	15400 kg	33950 lbs	
7.4 m	24' 3"	11640 kg	25660 lbs	
9.2 m	30' 2"	9320 kg	20550 lbs	
11.1 m	36' 5"	7720 kg	17020 lbs	

		<b>30000 kg</b>	<b>66140 lbs</b>	<b>D</b>
4.4 m	14' 5"	19300 kg	42550 lbs	
5.6 m	18' 4"	15100 kg	33290 lbs	
7.4 m	24' 3"	11300 kg	24910 lbs	
9.2 m	30' 2"	8960 kg	19750 lbs	
11.1 m	36' 5"	7370 kg	16250 lbs	
13.1 m	43' 0"	6230 kg	13730 lbs	

		<b>30000 kg</b>	<b>66140 lbs</b>	<b>E</b>
4.4 m	14' 5"	19000 kg	41890 lbs	
5.6 m	18' 4"	14800 kg	32630 lbs	
7.4 m	24' 3"	10960 kg	24160 lbs	
9.2 m	30' 2"	8630 kg	19030 lbs	
11.1 m	36' 5"	7020 kg	15480 lbs	
13.1 m	43' 0"	5870 kg	12940 lbs	
15.2 m	49' 10"	5050 kg	11130 lbs	

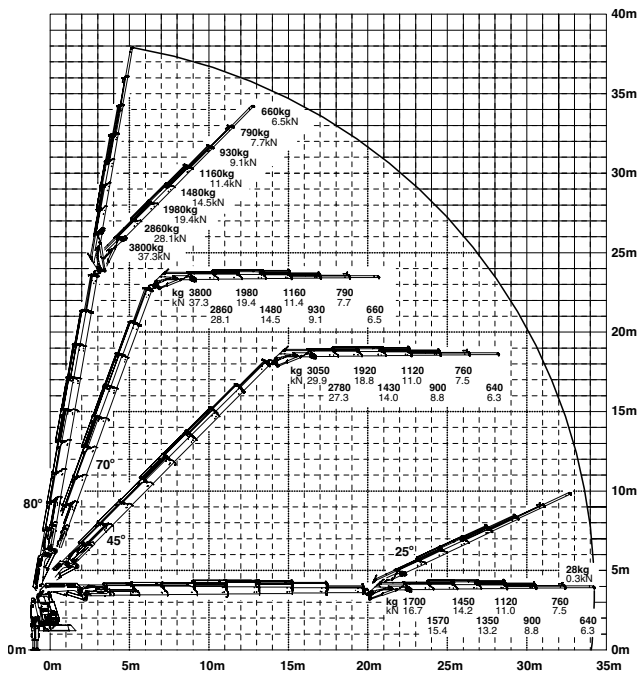
		<b>30000 kg</b>	<b>66140 lbs</b>	<b>F</b>
4.4 m	14' 5"	18800 kg	41450 lbs	
5.6 m	18' 4"	14530 kg	32030 lbs	
7.4 m	24' 3"	10670 kg	23520 lbs	
9.2 m	30' 2"	8300 kg	18300 lbs	
11.1 m	36' 5"	6700 kg	14770 lbs	
13.1 m	43' 0"	5540 kg	12210 lbs	
15.2 m	49' 10"	4700 kg	10360 lbs	
17.3 m	56' 9"	4120 kg	9080 lbs	
19.5 m*	64' 0"	3500 kg	7720 lbs	
21.8 m*	71' 6"	3000 kg	6610 lbs	

		<b>30000 kg</b>	<b>66140 lbs</b>	<b>G</b>
4.4 m	14' 5"	18620 kg	41050 lbs	
5.6 m	18' 4"	14330 kg	31590 lbs	
7.4 m	24' 3"	10430 kg	22990 lbs	
9.2 m	30' 2"	7960 kg	17550 lbs	
11.1 m	36' 5"	6360 kg	14020 lbs	
13.1 m	42' 12"	5220 kg	11510 lbs	
15.2 m	49' 10"	4420 kg	9740 lbs	
17.3 m	56' 9"	3820 kg	8420 lbs	
19.6 m	64' 4"	3350 kg	7390 lbs	
21.7 m*	64' 0"	2880 kg	6350 lbs	
24.8 m*	81' 4"	2480 kg	5470 lbs	

		<b>29200 kg</b>	<b>64370</b>	<b>H</b>
4.4 m	14' 5"	18500 kg	40780 lbs	
5.6 m	18' 4"	14150 kg	31190 lbs	
7.4 m	24' 3"	10200 kg	22490 lbs	
9.2 m	30' 2"	7850 kg	17310 lbs	
11.1 m	36' 5"	6200 kg	13670 lbs	
13.1 m	42' 12"	5030 kg	11090 lbs	
15.2 m	49' 10"	4200 kg	9260 lbs	
17.3 m	56' 9"	3580 kg	7890 lbs	
19.6 m	64' 4"	3100 kg	6830 lbs	
21.9 m	71' 10"	2770 kg	6110 lbs	
24.3 m*	79' 9"	2400 kg	5290 lbs	
26.9 m*	88' 3"	1650 kg	3640 lbs	

\*mechanical extension

### G PJ125E JV1



### F PJ170 JV1

